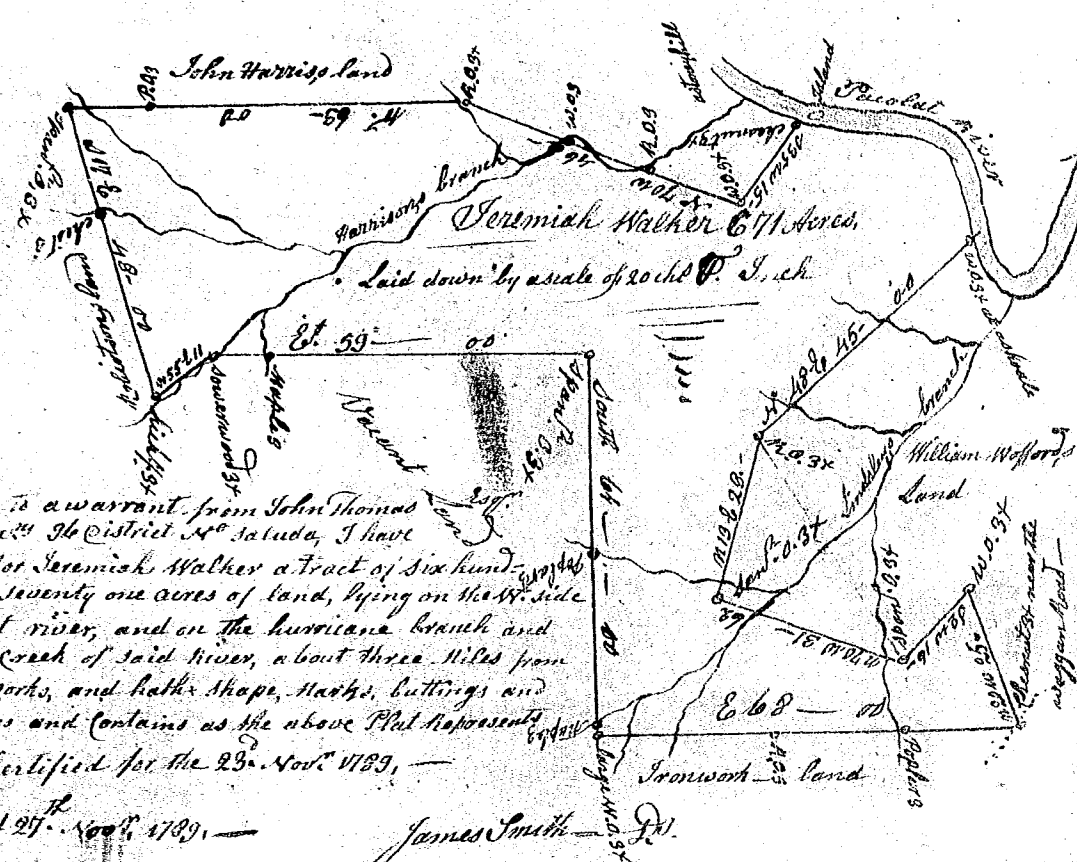
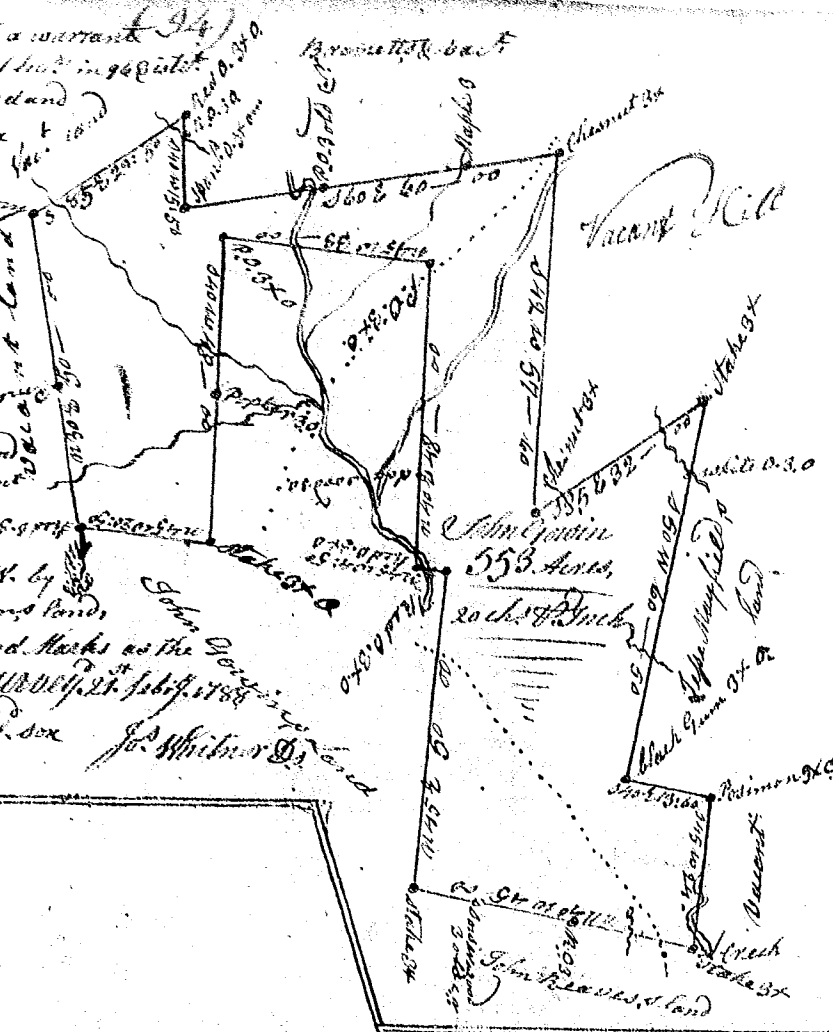


Pursuant to a warrant from John Thomas Esq. Comr. of Dist. in 94th Dist. No. Saluda, I have admeasured and laid out unto John Gowin a tract of five hundred and fifty three acres of land ^{to be} above the old boundary on both sides of Brometta Creek & wolf creek waters of the Middle fork of Saluda river bounded by lines running N.E. & S.E. by vacant land S.W. & S.E. by a Hill, S.W. & S.E. and S.W. by Cape Mayfield & vacant land N.W. by John Reeves and John Gowins Land N.W. by Burrows Land N.W. by Gowins Land and hath such shape and marks as the above Plat represents. I WITNESSE the 13th day of Nov. 1789. J. Whicker Esq.



Pursuant to a warrant from John Thomas Comr. of Dist. in 94th Dist. No. Saluda, I have laid out for Jeremiah Walker a tract of six hundred and seventy one acres of land, lying on the N.W. side of Pacolat river, and on the hurricane branch and Sindays Creek of said river, about three miles from the Ironworks, and hath shape, marks, cuttings and boundings and contains as the above Plat represents.

Certified for the 23rd Nov. 1789,
Recorded 27th Nov. 1789,
James Smith Esq.